



*Namale*

# WEDDINGS AT NAMALE



WEDDINGS AT NAMALE  
PAGE 2

---



TOTOKA "BEAUTIFUL"  
WEDDING PACKAGE  
PAGE 3

---



WANANAVU "MY LOVE"  
WEDDING PACKAGE  
PAGE 4

---



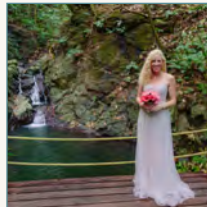
UASIVI "LOVERS"  
WEDDING PACKAGE  
PAGE 5

---



OPTIONAL WEDDING  
ADD-ONS  
PAGE 6

---



PHOTOGRAPHY, HAIR &  
MAKEUP  
PAGE 7

---



SOTA TALE!  
PAGE 8

---





*Namale*

# WEDDINGS AT NAMALE



## Weddings at Namale

Nestled in a secluded corner of Fiji where the rainforest meets the ocean, Namale offers a stunning 525-acre retreat, once a coconut plantation. Every day, guests are invited to explore lush rainforests, relax atop cliffs with breathtaking views of the Koro Sea, indulge in our award-winning spa, and fully immerse themselves in an authentic Fijian experience. The possibilities are endless.

Whether you're choosing to elope in this paradise or celebrating with loved ones, Namale is the ultimate wedding destination. Our dedicated team is highly trained and ready to ensure your special day is nothing short of unforgettable.

We take pride in turning your wedding dreams into reality. Our customizable wedding packages are designed to cater to your needs, ensuring your celebration is everything you've ever imagined.

**TOTOKA “BEAUTIFUL”  
WEDDING PACKAGE**

- Wedding Concierge
- Wedding Venue: Beach
- Tropical Bridal Bouquet
- Groom’s Boutonniere
- Celebrant
- Champagne Toast
- Welcome Bottle of Sparkling Wine

**Total Cost \$695 USD\***

This package is complimentary with a minimum 5-night stay in any bure or villa category from 2JAN – 31MAR annually.\*

To upgrade to other packages or to add on a la carte services, the difference will be applied to your final statement upon checkout. This offer may be combined with the year-round length of stay discount only. This offer is not combinable with other offers or promotions. Blackout dates apply.

*\* Wedding license is an additional cost and must be completed more than 30 days prior to arrival. Our wedding concierge can assist you with how to obtain and complete the necessary forms.*

*\*Price includes 12.5% Fijian government taxes. Weddings are not offered on Sundays or public holidays. Additional blackout dates may apply.*





### WANANAVU “MY LOVE” WEDDING PACKAGE

- Wedding Concierge
- Venue Choice of Beach or Blowhole Deck
- Tropical Bridal Bouquet
- Groom’s Boutonniere
- Celebrant
- Champagne Toast
- Welcome Bottle of Sparkling Wine
- Private Candlelit Dinner on Wedding Night
- Romantic Turndown on Wedding Night
- Breakfast in Bed Morning After Wedding
- Traditional Flower Arch
- Two-tier 4-inch Wedding Cake

**Total Cost \$995 USD\***

Any a la carte services selected will be applied to your final statement upon checkout.

*\* Wedding license is an additional cost and must be completed more than 30 days prior to arrival. Our wedding concierge can assist you with how to obtain and complete the necessary forms.*

*\*Price includes 12.5% Fijian government taxes. Weddings are not offered on Sundays or public holidays. Additional blackout dates may apply.*

## UASIVI “LOVERS” WEDDING PACKAGE

- Wedding Concierge
- Venue Choice of Beach or Blowhole Deck
- Tropical Bridal Bouquet
- Groom’s Boutonniere
- Celebrant
- Champagne Toast
- Welcome Bottle of Sparkling Wine
- Private Candlelit Dinner on Wedding Night
- Romantic Turndown on Wedding Night
- Breakfast in Bed Morning After Wedding
- Traditional Flower Arch
- Two-tier 4-inch Wedding Cake
- Palm-lined Aisle
- Private Surprise Location Lunch Day After Wedding
- Bride’s Floral Tiara
- Groom’s Lei
- Choir at the Ceremony
- One-hour Serenader at Dinner
- Four Fijian Warrior Escorts for the Bride
- Moonlight Magic Couples Spa Treatment

**Total Cost \$1,995 USD\***

Any a la carte services selected will be applied to your final statement upon checkout.

*\* Wedding license is an additional cost and must be completed more than 30 days prior to arrival. Our wedding concierge can assist you with how to obtain and complete the necessary forms.*

*\*Price includes 12.5% Fijian government taxes. Weddings are not offered on Sundays or public holidays. Additional blackout dates may apply.*



## OPTIONAL WEDDING ADD-ONS

Optional Wedding Add-Ons	Advance Purchase Price 12.5% Tax Inclusive (USD)
Orchids for Bouquet - Per Stem	\$20
Flower arrangement for bure	From \$30
Groom's Lei	\$35
Bride's Floral Tiara	\$75
8" double cake – upgrade only	\$75
Fijian serenader at dinner	\$95
4 Warrior Escorts for bride	\$145
Two-tier 4" cake	\$150
Local choir during ceremony	\$295
Floral Arch	\$345
Wedding License	\$375
Waterfall Wedding Venue	\$395
Meke Performance	\$495
Premium wine list	Ask Concierge



## PHOTOGRAPHY, HAIR & MAKEUP

If you are interested in photography, hair and/or makeup services, please ask our wedding concierge for more information and recommendations on vendors.

## LEGAL INFORMATION

### Registration

All weddings at Namale are pre-registered prior to the couple's arrival into Fiji. Special circumstances may require personal registration by the couple, along with the Namale wedding concierge, at the Savusavu Registry Office.

### Documentation

Information must be submitted to Namale's wedding concierge more than 30 days prior to the wedding date to ensure paperwork is properly submitted to Fiji's Savusavu Registry Office.

- Special license form – provided by wedding concierge
- Marriage certificate request – provided by wedding concierge
- Waiver notice letter – provided by wedding concierge
- Certified or original copy of birth certificates
- Passport bio data page with photos
- Single status form
- Divorce papers (if previously divorced)
- Death certificate (if widowed)
- Travel itinerary – flights & all accommodations
- Identification of witnesses\*

*\*If traveling without witnesses, Namale will provide witnesses with ID*



### Additional Requirements

- The bride & groom must bring original documents listed above with them.
- Two witnesses are required during the wedding ceremony (Namale will provide if no guests).
- Following the wedding ceremony signed documents will be sent to the mainland for processing. The process will take a minimum of 2 weeks to complete & be mailed to the couple.
- All licensed weddings performed at Namale are legally binding in line with Fijian laws and are recognized in most international countries.

Your wedding concierge at Namale will be happy to go over any questions you may have. You may also consult with your local registry office for specific requirements on international marriages.



# SOTA TALE!

*See you again!*



*Namale*